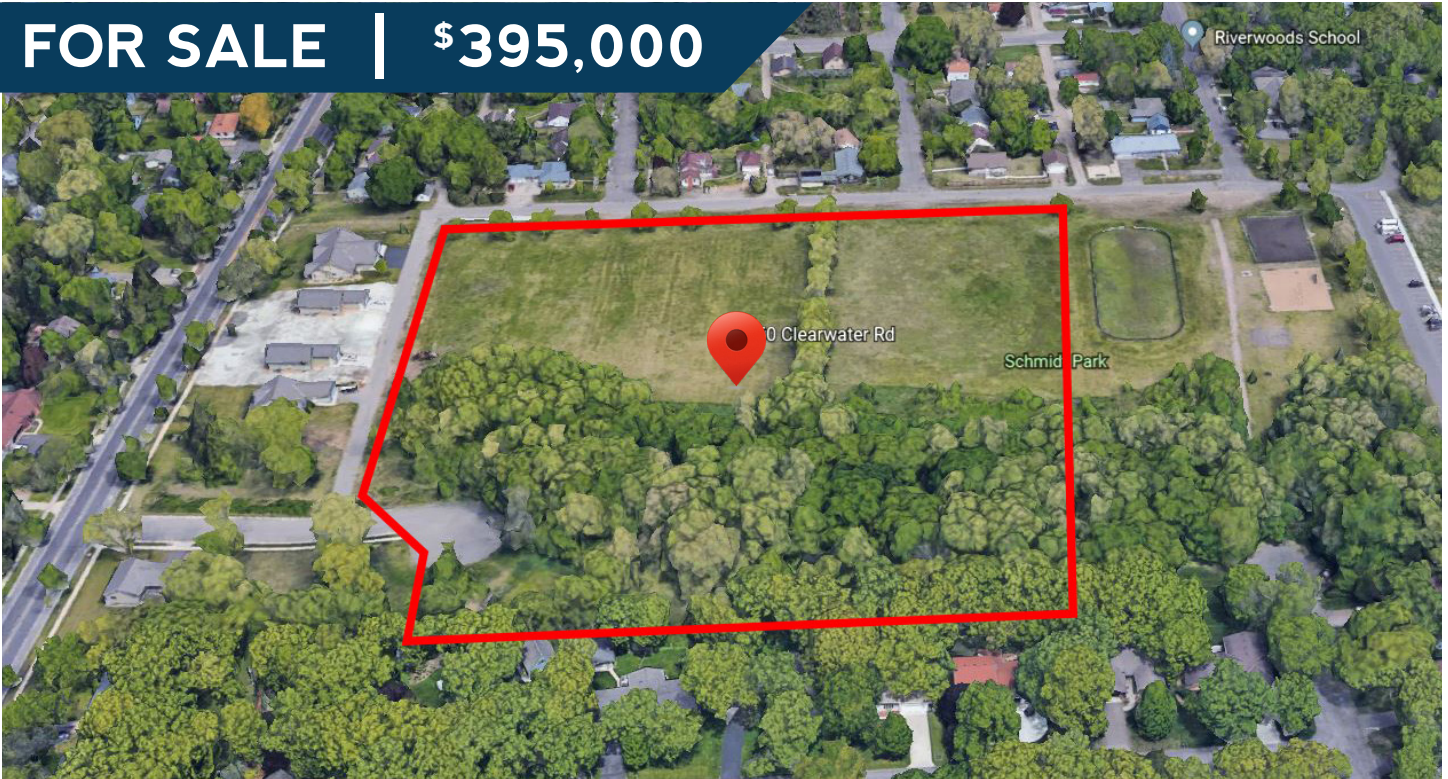


FOR SALE | \$395,000



9.5 Acre Site - Zoned PUD

A preliminary plat for this parcel exists. 19 single family home sites, 9 twin home sites, for a total of 37 housing units. This is an unrecorded plat and may be reconfigured and submitted for an approval.

- Fantastic in-fill site.
- Some wooded, about 65% open.
- Near St. Cloud State University.
- Legal: Outlot A, Paradise Park.



3900 Roosevelt Road #125
St. Cloud, MN 56301
320.253.0003
www.granitecityproperties.com

Mike Bobick
320.333.2692
mikeb@gcremn.com

